

# LEOPARD 32 M/Y ATHOS



AMAZING SPORTY AND VERY FAST 32 MT PLEASURE YACHT, WITH VERY ELEGANT SLEEK AND MODERN LINES WITH COMFORTABLE AND LUXURIOUS INTERIOR AND EXTERIOR ACCOMMODATIONS.



**POWERED BY THREE 2000 HP MTU ENGINES  
AND DRIVEN BY THREE KAMEWA HYDROJET,  
THIS YACHT IS CAPABLE OF REACHING MAX 38  
KNOTS WITH A CRUISING SPEED OF 28 KNOTS.**





# BOW VIEW





## THE RELAX / SUNDECK BOW AREA





## STERN VIEW





## THE AMAZING STERN SUNDECK AREA





## THE EXCLUSIVE AND COMFORTABLE DINING AREA





## THE FLYBRIDGE WITH EXTRA LARGE SUNDECK





THE FLYBRIDGE WITH  
TABLE AND JACUZZI





## THE FLYBRIDGE CONTROL PANEL





THE LOUNGE WITH DINING ROOM AND ORIGINAL BAR  
OFFERS THE BEST HOSPITALITY AT ALL LEVELS





THE LOUNGE WITH DINING ROOM AND ITS  
LARGE TABLE UP TO 12 PERSON





## THE MAIN CONTROL PANEL





## THE LARGE AND LUXURIOUS OWNER'S CABIN





## THE LARGE AND LUXURIOUS OWNER'S CABIN



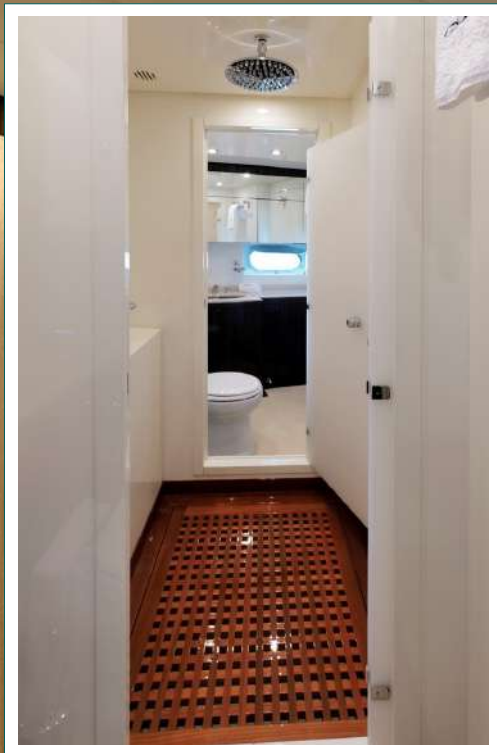


## THE VIP CABIN





## THE VIP CABIN





# ONE COMFORTABLE CABIN WITH A DOUBLE BED





# ONE TWIN PLUS A PULLMAN BED





# THE NEW LARGE CABIN WITH A COMFORTABLE DOUBLE BED





# THE NEW LARGE CABIN WITH A COMFORTABLE DOUBLE BED





ON THE LOWER DECK, TOWARDS THE STERN, IS THE LARGE GALLEY





## THE CREW





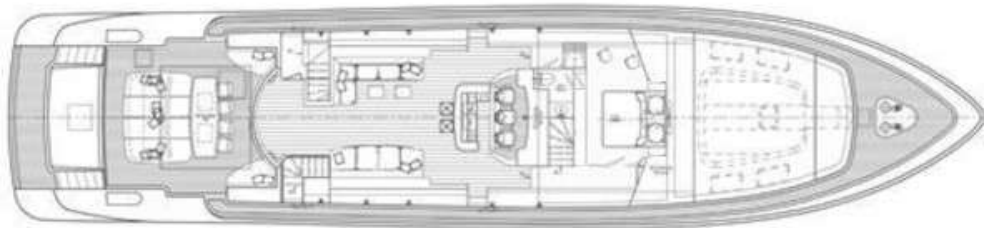
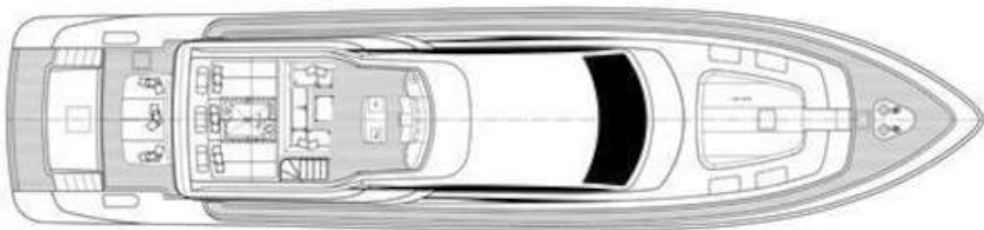
THE TRANSOM BOASTS A FAST TENDER, A SKI JET, 2 SEA BOBS  
AND A WIDE RANGE OF THE MOST TRENDY TOYS





# TECHNICAL SPECIFICATIONS

## LAYOUT



## PRINCIPAL DIMENSIONS

LENGTH OVERALL	32,20 M
FULL LENGTH	31,70 M
BEAM	7,35 M
DRAFT	1,20 M
DISPLACEMENT APPROX.	176 T
FUEL CAPACITY	12000 L
WATER CAPACITY (INCL. GALORIFIER)	4000 L

## ENGINES AND GENERATORS

MAIN ENGINES	3 MTU 16V2000 M92
GENERATORS	2 KOHLER 45 KW
WATERMAKER	IDROMAR 250 L/H
JET PROPULSION	3 KAMEWA

## OTHER SPECIFICATIONS

MAXIMUM SPEED	38 KNOTS
CRUISING SPEED	28 KNOTS
HOURLY CONSUMPTION	800/1200 LT/HOUR
RANGE	300 MILES
ACCOMODATIONS	5 CABINS - 11 BEDS
CABINS CONFIGURATION	2 QUEEN, 2 DOUBLE, 1 TWIN (WITH 3RD BED)
BATHROOMS	5 + 2 CREW
CREW CABINS	2 FOR 5 SEATS